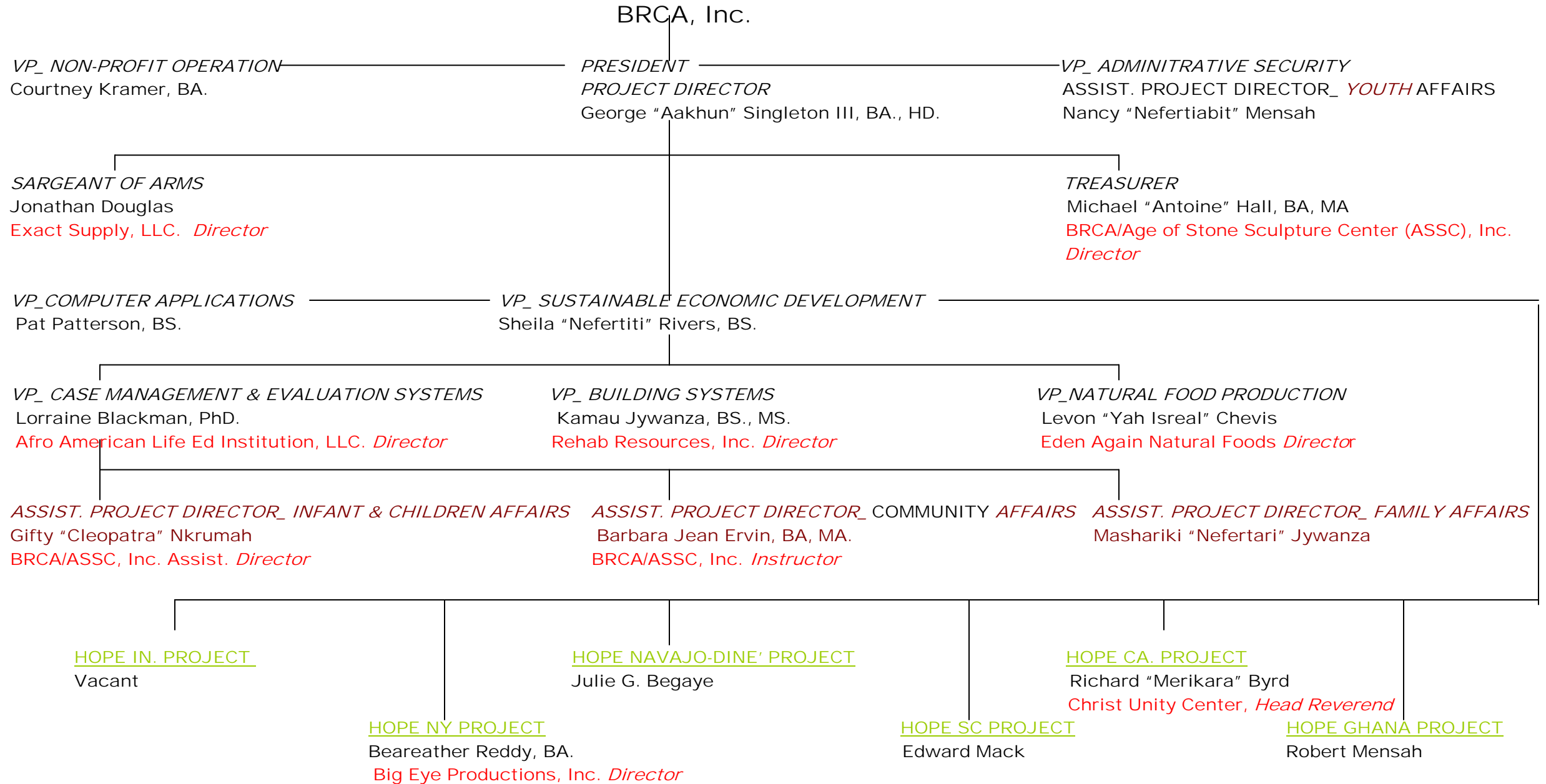
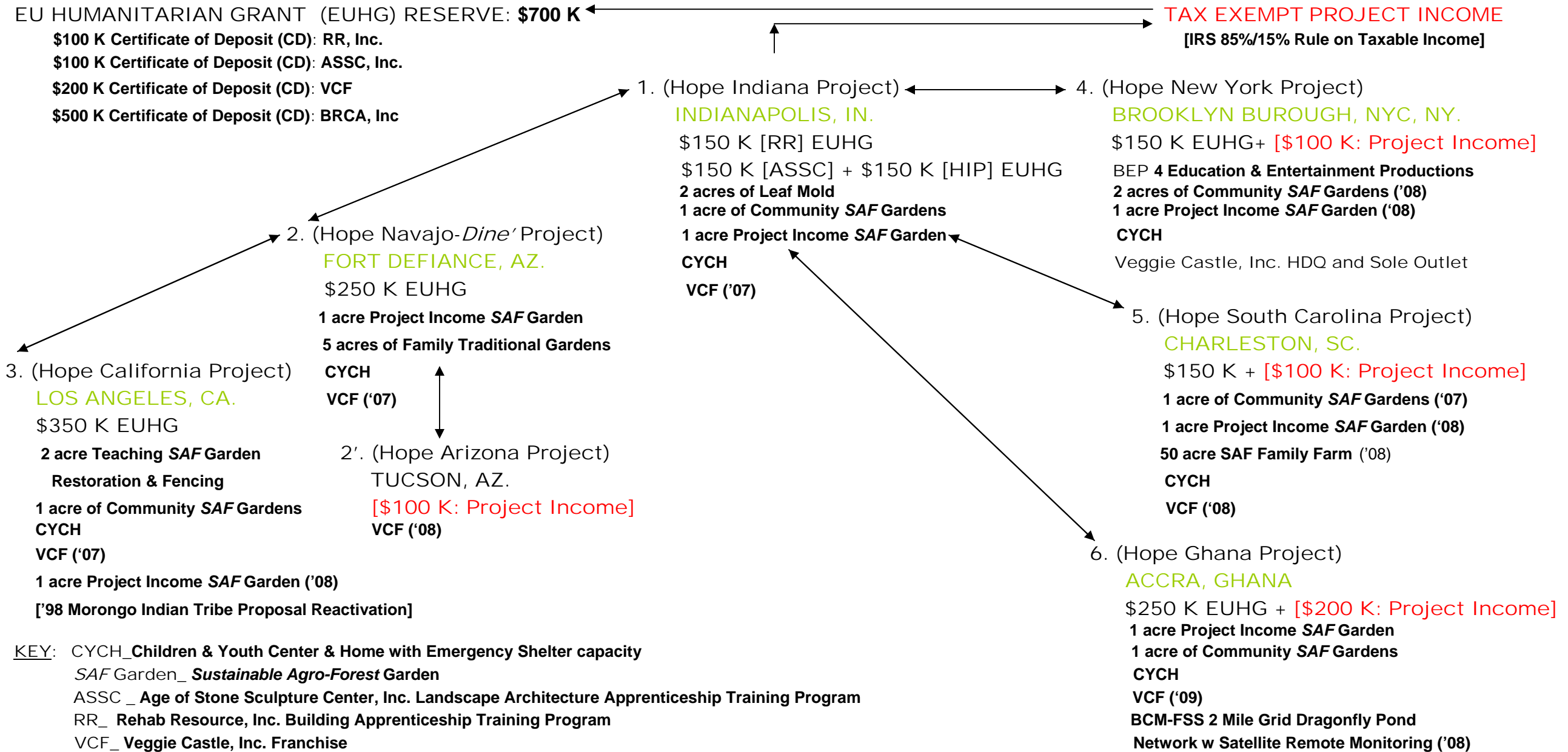


BLACQENDIAN ROYAL COOP ASSOCIATION (BRCA), INC. **AND LEGAL COLLABORATIVE ORGANIZATION** "OPERATION BLACKBERRY PATCH (OBP)"



BRCA/INTERNATIONAL *SUSTAINABLE ECONOMIC DEVELOPMENT* DEMONSTRATION:: 1. PROJECT SYSTEM DESIGN

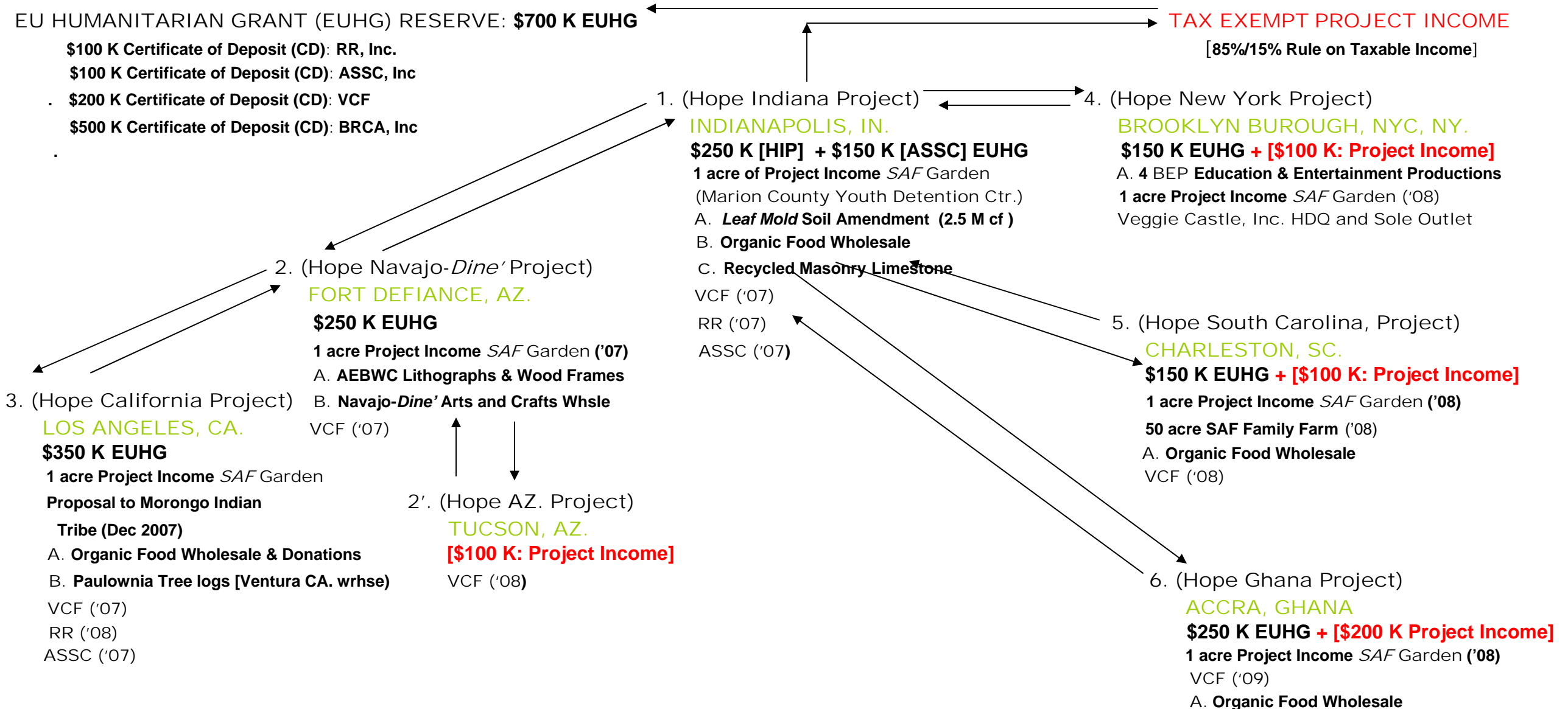
Funded BY 2007 EUROPEAN UNION HUMANITARIAN GRANT (EUHG) to BRCA, INC. [\$2.5 M]



KEY: CYCH_ Children & Youth Center & Home with Emergency Shelter capacity
 SAF Garden_ Sustainable Agro-Forest Garden
 ASSC_ Age of Stone Sculpture Center, Inc. Landscape Architecture Apprenticeship Training Program
 RR_ Rehab Resource, Inc. Building Apprenticeship Training Program
 VCF_ Veggie Castle, Inc. Franchise
 BCM-FSS_ Biological Control of Mosquito and Fly Sub-System
 BEP, Inc. _ Big Eyed Productions, Inc.

BRCA/INTERNATIONAL *SUSTAINABLE ECONOMIC DEVELOPMENT* DEMONSTRATION:: 2. PROJECT INCOME PLAN

Funded by the 2007 EUROPEAN UNION HUMANITARIAN GRANT to BRCA, INC. [\$2.5 M]



KEY: SAF Garden _ *Sustainable Agro-Forest (SAF) Garden*

RR _ Rehab Resource, Inc. Building Apprenticeship Training Program

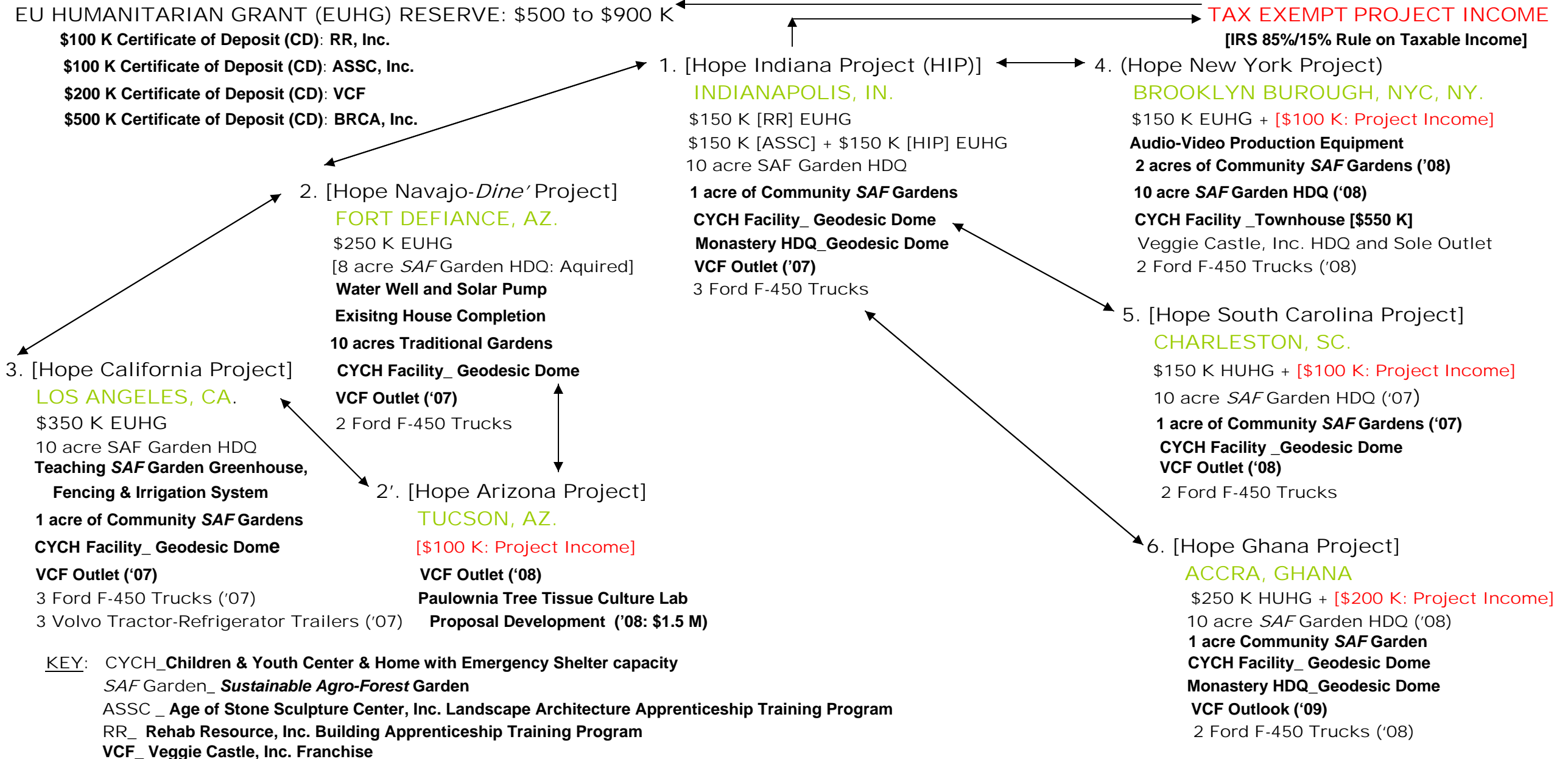
ASSC _ Age of Stone Sculpture Center, Inc. Landscape Architecture Apprenticeship Training Program

VCF _ Veggie Castle, Inc. Franchise (Brooklyn, NYC., NY.)

BEP _ Big Eyed Productions, Inc. (Brooklyn, NYC., NY.)

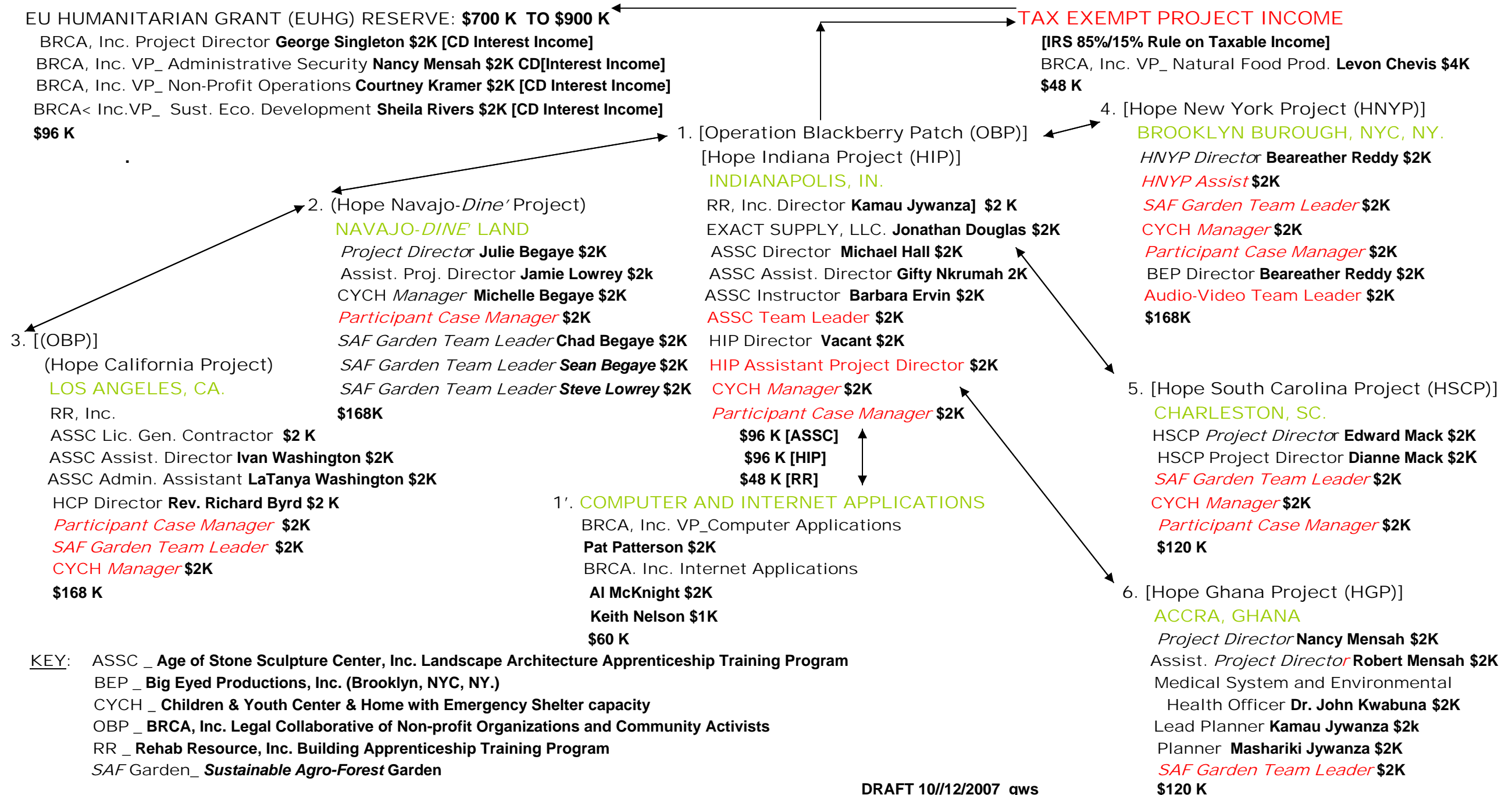
BRCA/INTERNATIONAL *SUSTAINABLE ECONOMIC DEVELOPMENT* DEMONSTRATION:: 3. PROJECT FACILITY, EQUIPMENT, MATERIALS PLAN

Funded by the 2007 EUROPEAN UNION HUMANITARIAN GRANT to BRCA, INC. [\$2.5 M]



BRCA/INTERNATIONAL *SUSTAINABLE ECONOMIC DEVELOPMENT* DEMONSTRATION:: 4. PROJECT STAFF PLAN: \$1,044 K

Funded by the 2007 EUROPEAN UNION HUMANITARIAN GRANT to BRCA, INC. [\$2.5 M]



BRCA/INTERNATIONAL *SUSTAINABLE ECONOMIC DEVELOPMENT* DEMONSTRATION:: **5. PROJECT PARTICIPANT & MEMBER PLAN: \$564 K**
 Funded by the 2007 EUROPEAN UNION HUMANITARIAN GRANT to BRCA, INC. [\$2.5 M]

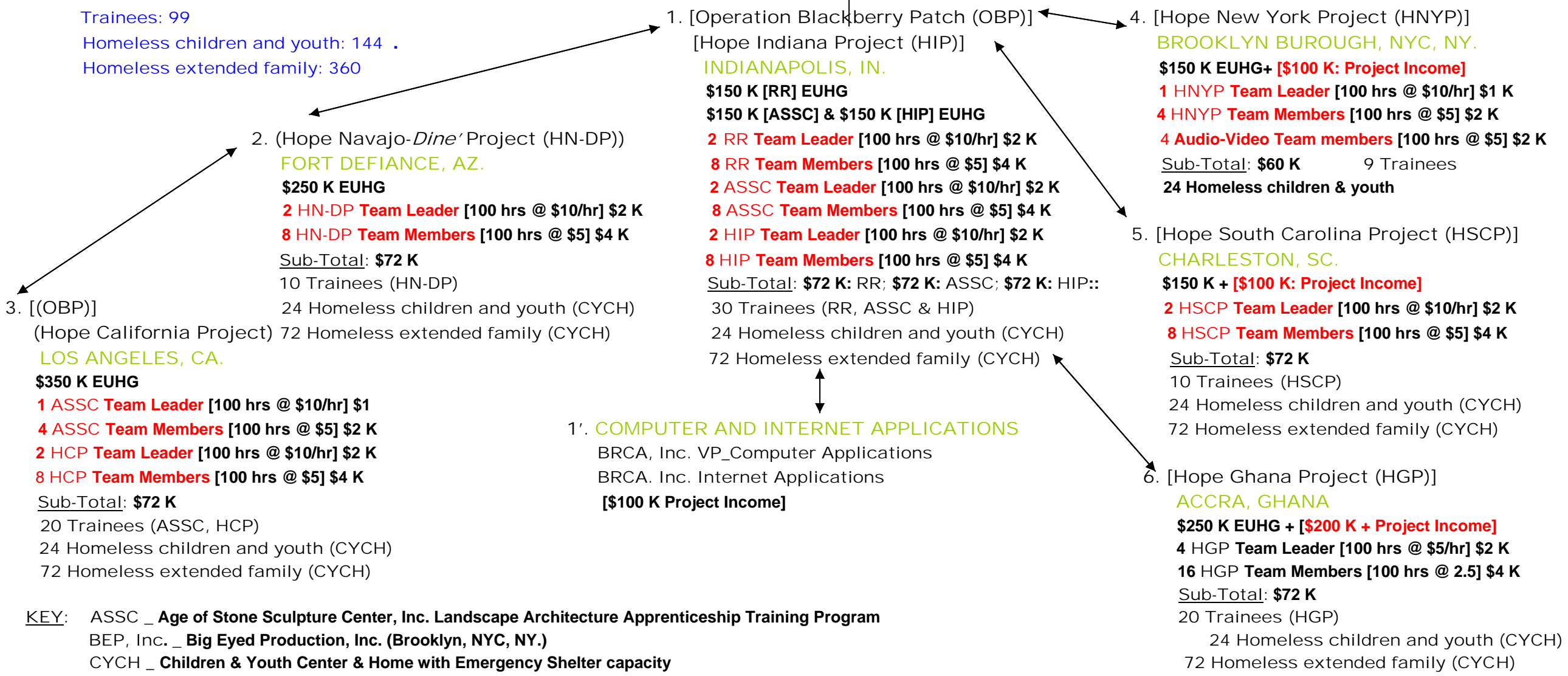
EU HUMANITARIAN GRANT (EUHG) RESERVE: **\$700 K TO \$900 K**

TAX EXEMPT PROJECT INCOME
 [IRS 85%/15% Rule on Taxable Income]

SUB-TOTALS: \$564 K

PARTICIPANT TOTAL *

Trainees: 99
 Homeless children and youth: 144
 Homeless extended family: 360



KEY: ASSC _ Age of Stone Sculpture Center, Inc. Landscape Architecture Apprenticeship Training Program
 BEP, Inc. _ Big Eyed Production, Inc. (Brooklyn, NYC, NY.)
 CYCH _ Children & Youth Center & Home with Emergency Shelter capacity
 OBP _ BRCA, Inc. Legal Collaborative of Non-profit Organizations and Community Activists
 RR _ Rehab Resource, Inc. Building Apprenticeship Training Program
 SAF Garden_ Sustainable Agro-Forest (SAF) Garden

* NOTE: Participant Levels will double in 2008-2009 as each Site installs and operates its second 1 acre Commercial SAF Garden.

BRCA/INTERNATIONAL *SUSTAINABLE ECONOMIC DEVELOPMENT* DEMONSTRATION:: 5. PROJECT PARTICIPANT & MEMBER PLAN: \$1128K YEAR 2

Funded by the 2007 EUROPEAN UNION HUMANITARIAN GRANT to BRCA, INC. [\$2.5 M]

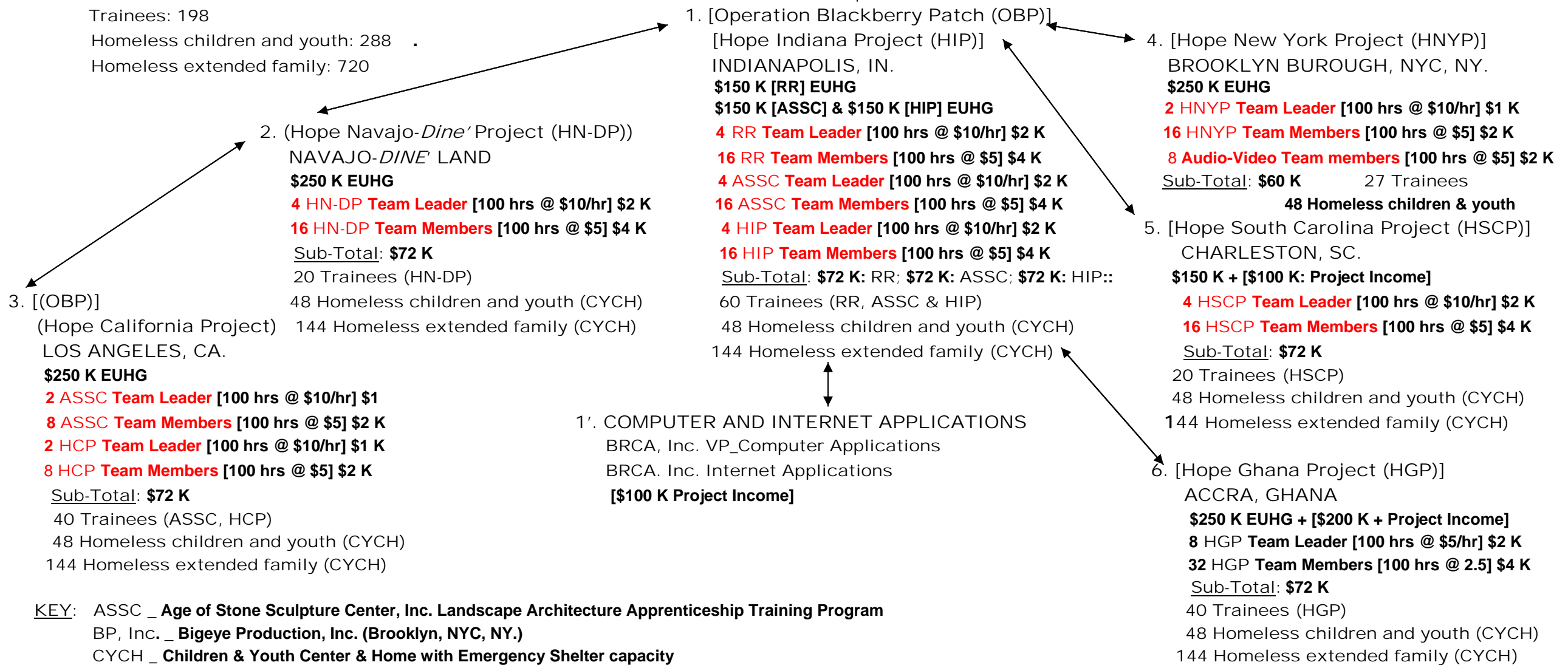
EU HUMANITARIAN GRANT (EUHG) RESERVE: **\$700 K TO \$900 K**

TAX EXEMPT PROJECT INCOME
[IRS 85%/15% Rule on Taxable Income]

SUB-TOTALS: \$564 K

PARTICIPANT TOTAL *: NOTE: * **Participant Levels will double in 2009-2010.**

Trainees: 198
Homeless children and youth: 288
Homeless extended family: 720



KEY: ASSC _ **Age of Stone Sculpture Center, Inc. Landscape Architecture Apprenticeship Training Program**
BP, Inc. _ **Bigeye Production, Inc. (Brooklyn, NYC, NY.)**
CYCH _ **Children & Youth Center & Home with Emergency Shelter capacity**
OBP _ **BRCA, Inc. Legal Collaborative of Non-profit Organizations and Community Activists**
RR _ **Rehab Resource, Inc. Building Apprenticeship Training Program**
SAF Garden_ **Sustainable Agro-Forest (SAF) Garden**
YOU, Inc. _ **Youth Opportunities Unlimited, Inc. (Los Angeles, CA.)**